

XPERIA Z Ultra , C68

**Exchange Board packing instruction
(for New or Repaired Good boards)**

CGQZFDA

© Sony Mobile Communications

New or Repaired Exchange Board Packing Instruction

Exchange Board consists of below three parts:

Main PBA

Relay FPC(1270-0337

Holder Mic base(1271-1472)

Below describe the steps how to pack the new Exchange Boards (from production) or repaired board (from EMS factory) or shipping consignment boards between HVCs/hub to their service locations and via versa in the local country.

1. New or/and repaired Boards with mounted FPC must be stored in a tray to avoid damage to FPC Board connection
2. One tray can contain up to 3 pieces of boards as shown in Pic 1

Pic1

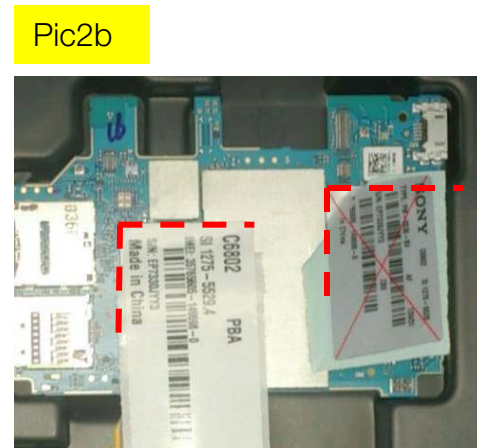
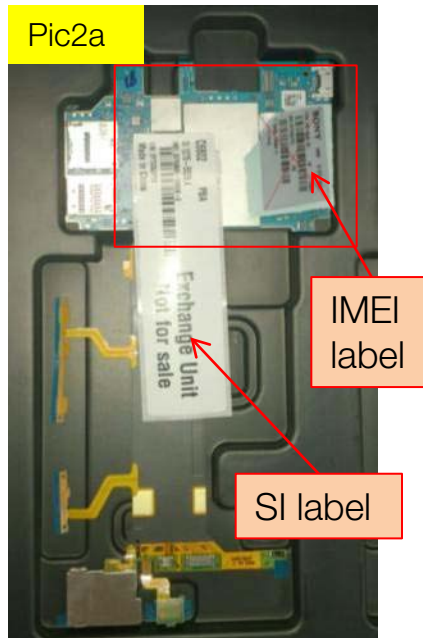


New or Repaired Exchange Board Packing Instruction

3. Peel off part of peeling paper of IMEI label (Pic2a) and SI label then paste the labels shown in Pic 2b Align with the corner of shield can. (applicable to production and repair factory only)

Do not paste the labels in contact with the PBA.

4. Insert the board securely onto the tray shown in Pic3.
5. One box can stack up maximum 8 layers of trays (ie $3 \times 8 = 24$ boards) + 1 empty tray on top to hold the board underneath from moving.



New or Repaired Exchange Board Packing Instruction



6. Stack up 9 layer of trays like above picture and tape it around 2 edges



7. Put trays into the shielding bag and folded it



8. Seal the shielding bag with tape



9. Put the sealed bag into master box



10. Seal the master box



11. Print the list of IMEI label and paste on the corner of the master box (Mandatory for Production / Moduslink/ Repair factory except HVC/SL)

New or Repaired Exchange Board Packing Instruction

Packaging part number in estar to order

- 1. Tray plate C68 : B70041041 Dimension: 367x292x17mm
- 2. Master Pack box : BMC 994 0132 (400x300x120cm include 2 cardboard)
- 3. Shielding bag : BMC 994 0134 (400*300*110 mm)